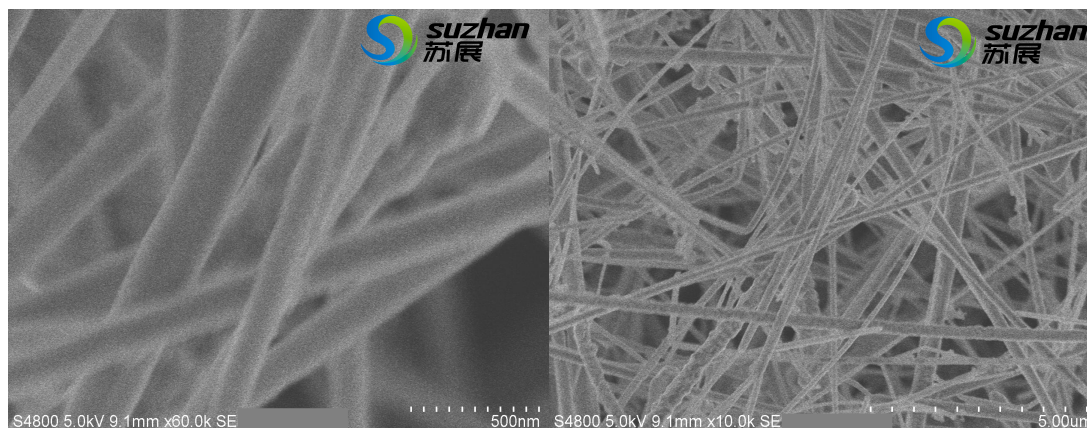


## SZ-005-2 较长铜纳米线

### 1 技术参数 (Specification)

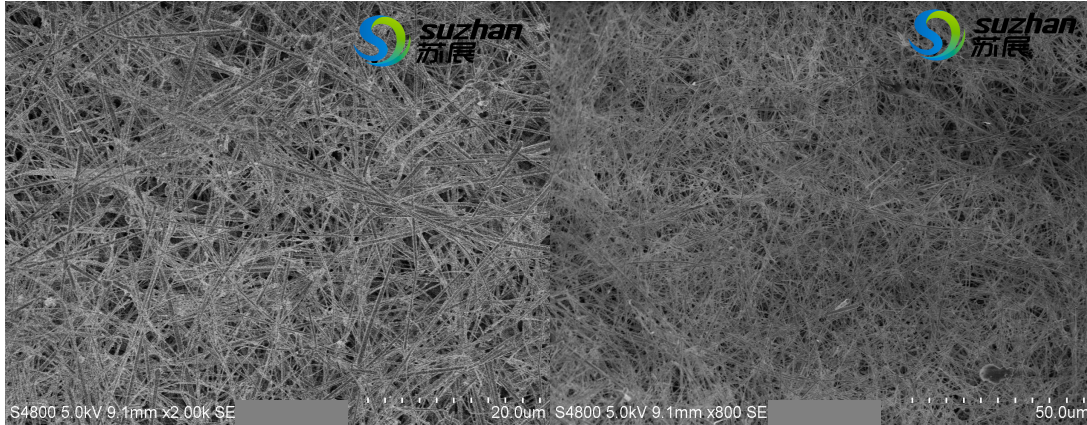
产品 Product	较长铜纳米线 Longer Copper Nanowires
牌号 ID	SZ-005-2
直径 Diameter	100-300nm
长度 Length	30-50 $\mu$ m
浓度 Concentration	2 mg/ml
溶剂 Solvent	乙醇、水 Ethanol or water

### 2 表征测试 (Characterizations)



南京苏展智能科技有限公司  
 地址: 南京市栖霞区广月路 30 号十月科创园 S06 栋南京邮电  
 大学国家大学科技园  
 邮编: 210033  
 电话 Tel: 13801599205  
[Http://www.cnsuzhan.com](http://www.cnsuzhan.com)

Nanjing Suzhan Smart Tech Co.,Ltd  
 Add: Nanjing City Jiangsu Province China  
 Zip: for 210033  
 E-mail: cnsuzhan@126.com



### 3 应用领域 (Application Fields)

透明导电薄膜、柔性显示器、太阳能电池板、传感器、催化剂等。

Transparent conductive films, flexible displays, solar panels, sensors, catalysts, etc.

### 4 储存条件(Storage Conditions)

4℃冷藏密封保存，在未引入污染源的情况下最长保存期限为 1 个月。

Sealed and keep at 4℃. Expiry date: The maximum shelf life is one month without the introduction of a source of pollution.

### 5 使用须知 (Terms and Conditions)

铜纳米线有沉底现象是正常的，请使用前在稍大功率的超声波清洗器中振荡超声，可辅以搅拌棒搅拌。一般 300 W 以内超声功率是可以的，时间不超过 3 min。若为 600-800 W，则不超过 1 min。分散均匀后可维持一段时间不沉降。

It is normal that the Cu nanowires will precipitate in the bottle. Please sonicate it using a ultrasonic cleaner with a slightly higher power , and stir with a stirring rod. Generally, less than 3 min with 300W ultrasonic power and less than 1 min with 600-800 W ultrasonic power. After uniform dispersion, it can be maintained for a period of time without sedimentation.

**声明：**我司保证技术报告中的信息的准确性，但不保证材料的普适性，也不负责由此导致的任何损失。提供的参数为统计数据，允许少量浮动。且我司提供的技术报告都是面向所有客户，报告中的表征图片请勿擅自截图使用。

**Disclaimer:** SUZHAN LLC believes that the information in this Technical Data Sheet is accurate and represents the best and most current information available to us. SUZHAN Material makes no representations or warranties either express or implied, regarding the suitability of the material for any purpose or the accuracy of the information contained within this document. Accordingly, SUZHAN Material will not be responsible for damages resulting from use of or reliance upon this information. Please do not use screen shots of any characteristic graphs in this report without permission.

10/18/2018 Ed